



Evergreen Underground Water Conservation District

Environmental Advisory Committee

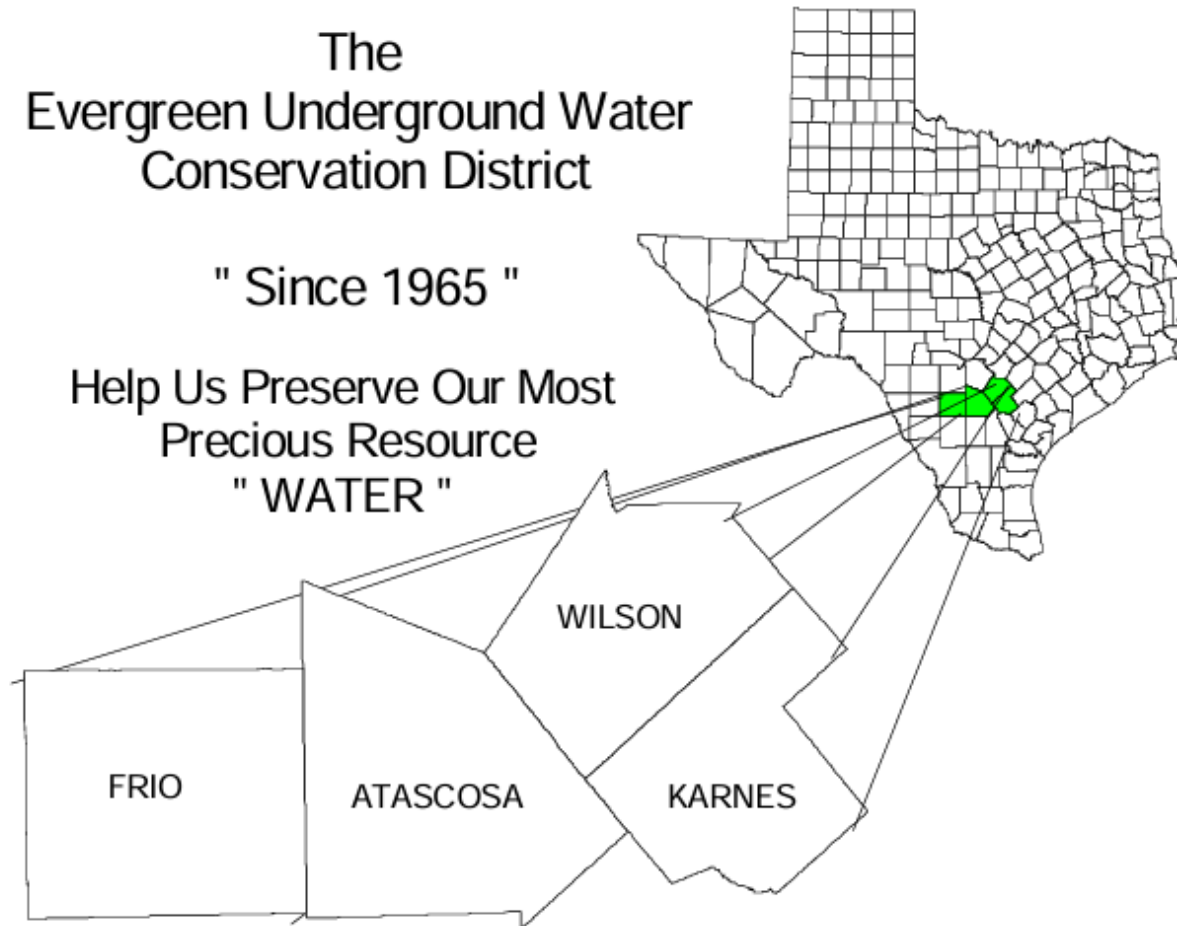
October 18, 2024

Evergreen Underground Water Conservation District

The
Evergreen Underground Water
Conservation District

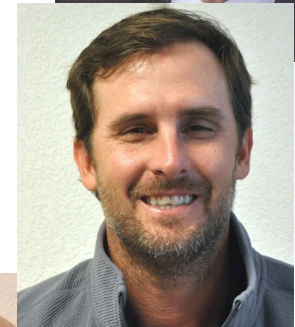
" Since 1965 "

Help Us Preserve Our Most
Precious Resource
" WATER "



- 59th Legislature, 1965
- 60th Legislature, 1967
- 68th Legislature, 1983
- 69th Legislature, 1985
- 88th Legislature, 2023

Board of Directors



At-Large



*"...for the purpose of conserving,
preserving, protecting, and
recharging the underground
water in the district."*

The District directs its efforts for the conservation, preservation, protection, recharging, and prevention of waste of groundwater in groundwater reservoirs or their subdivisions.

Fulfilling our mission...



Monitoring



Science



Policy



Management



Education

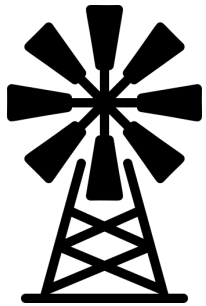
Random Facts



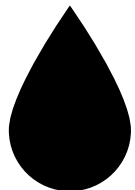
3,845 sq mile Jurisdiction



\$10.75 Average Annual Tax



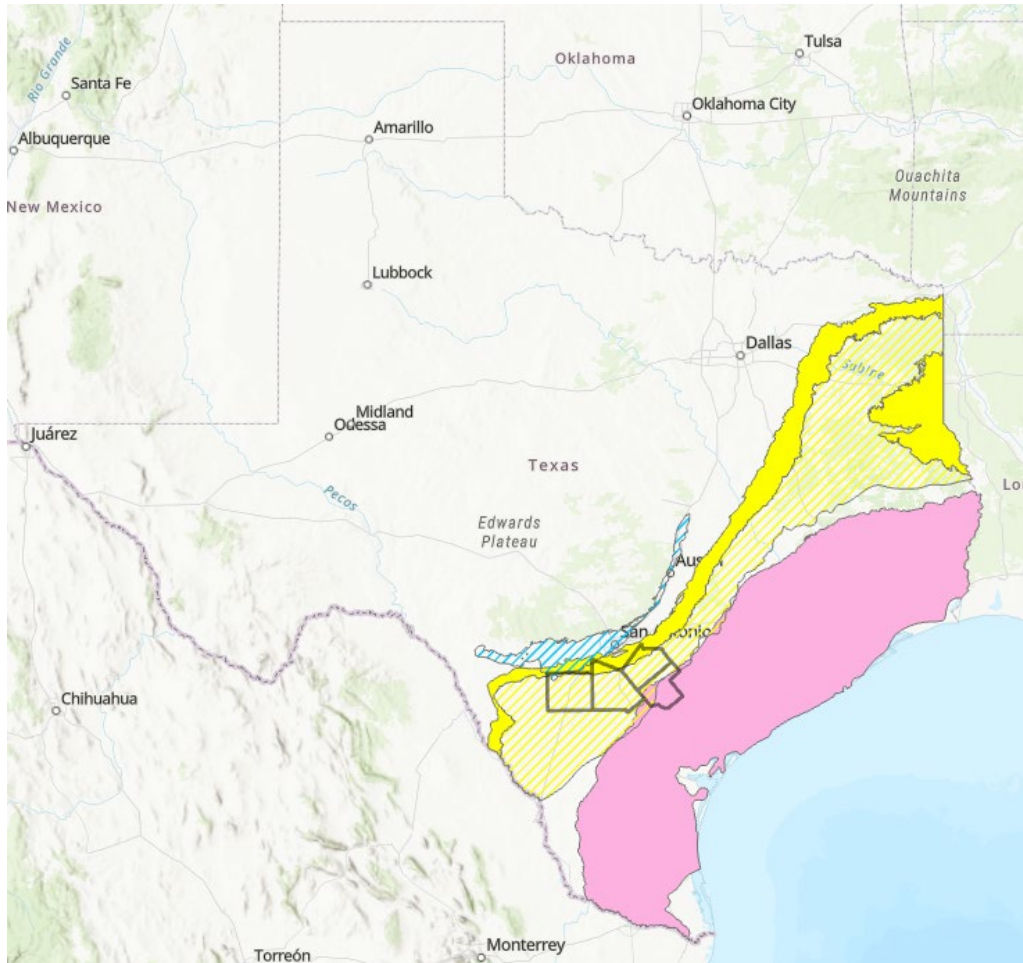
5,923 Total Wells



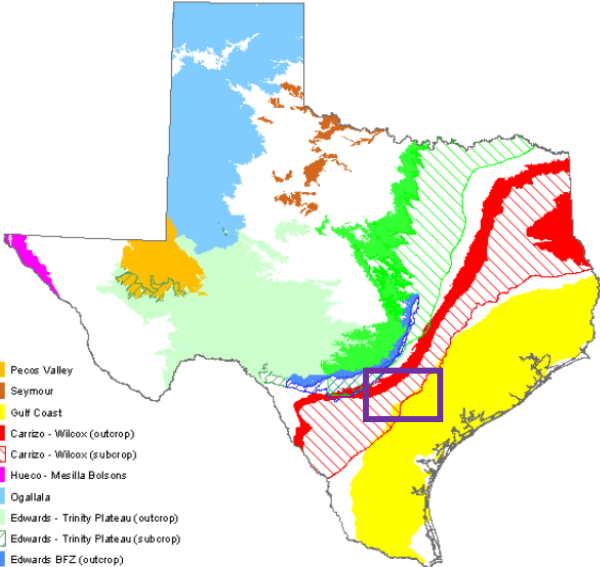
965,786 ac-ft permitted



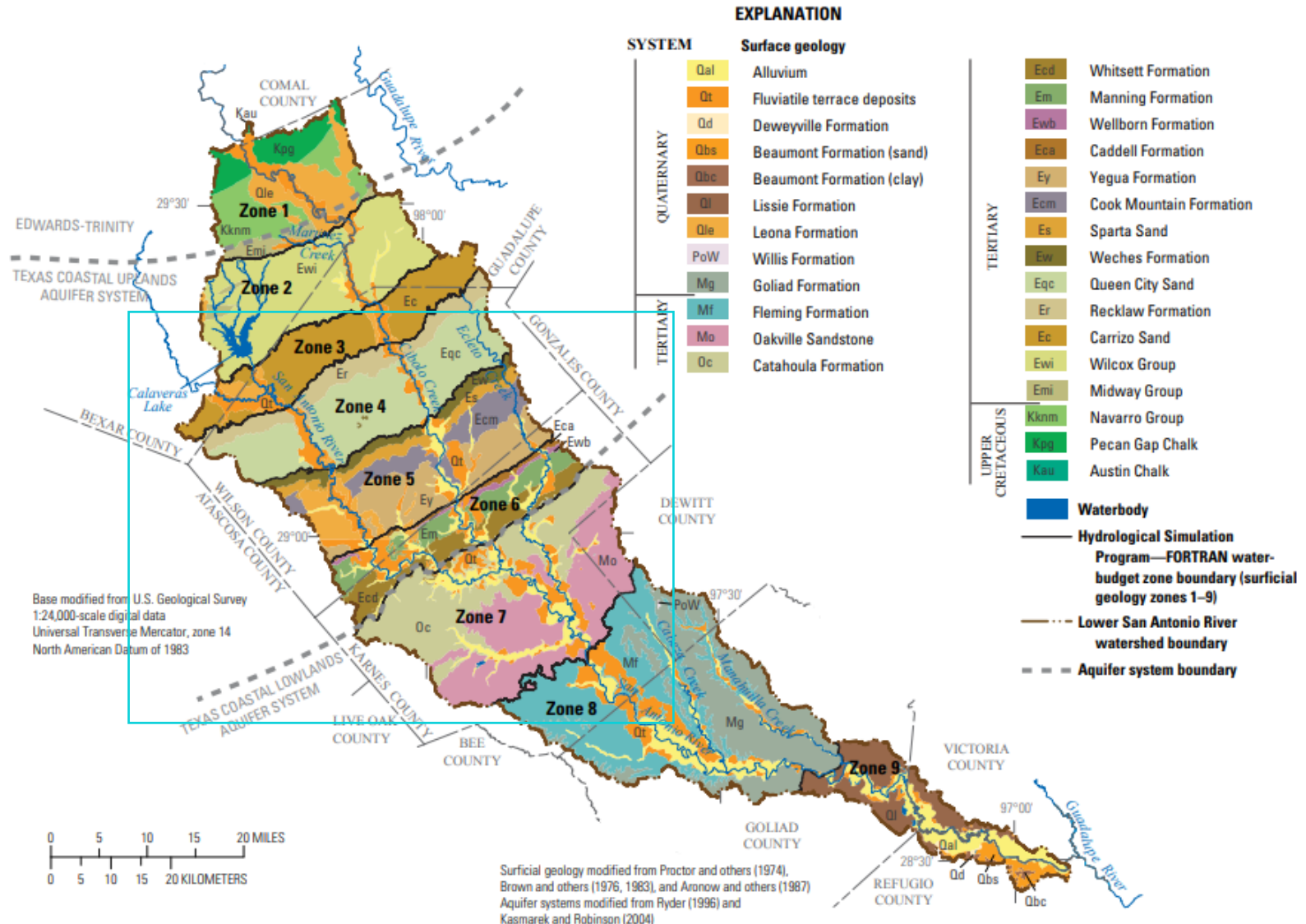
Aquifers of the Evergreen UWCD



Groundwater of the Evergreen

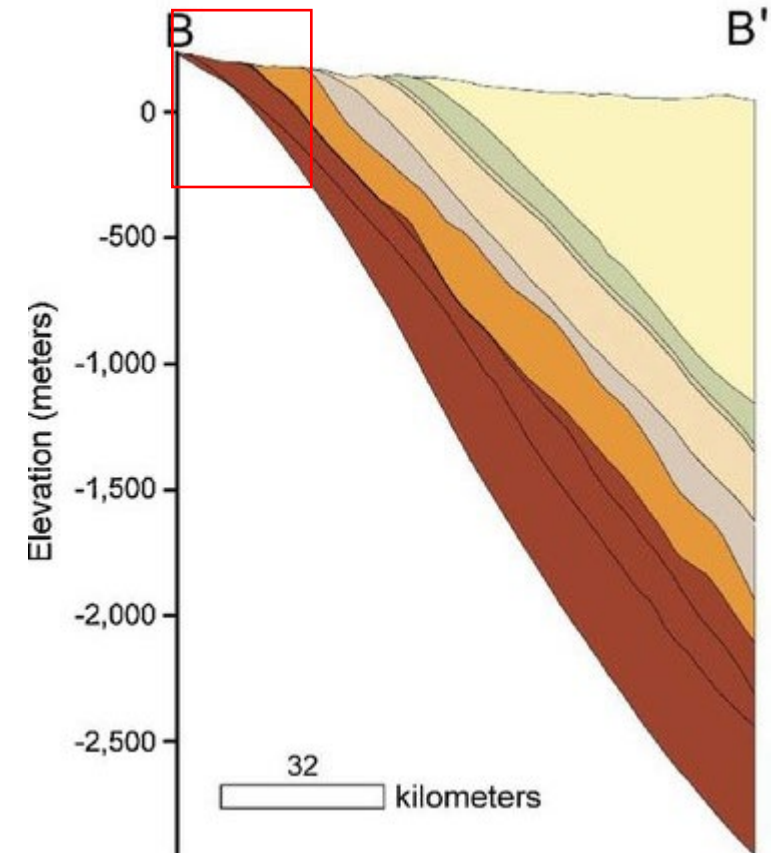
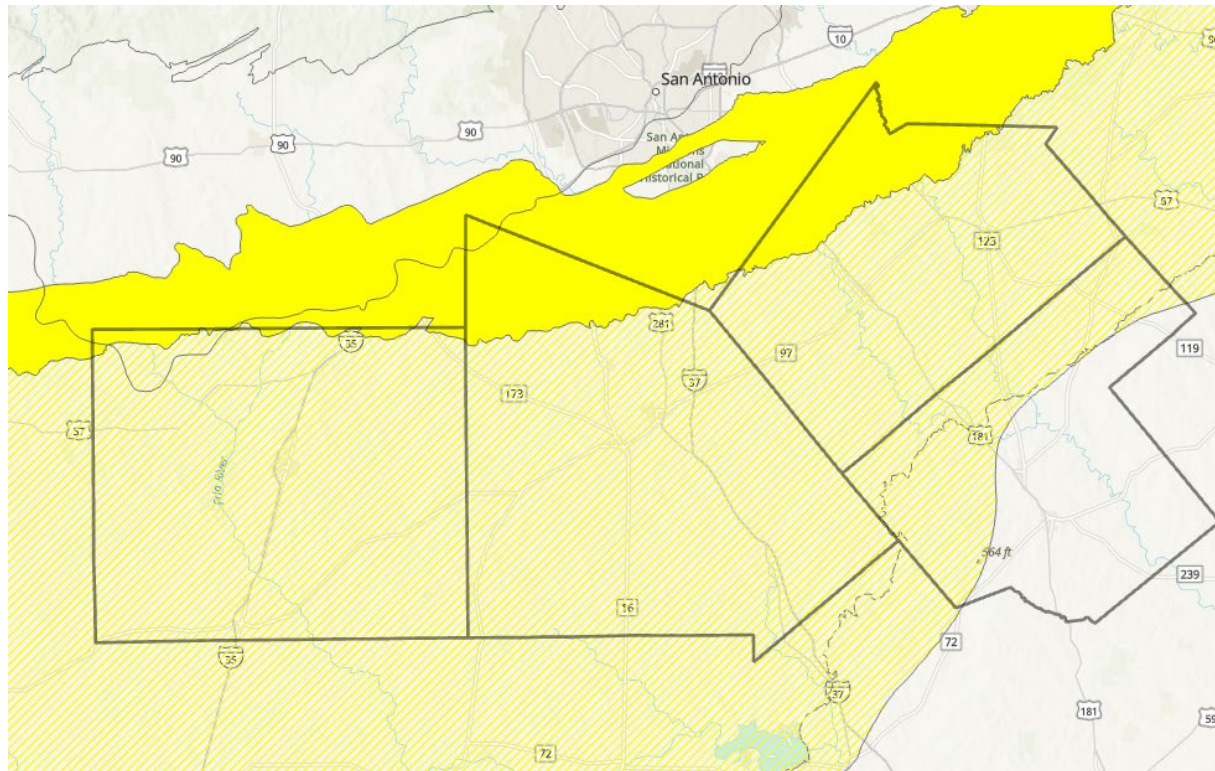


- Pecos Valley
- Seymour
- Gulf Coast
- Carrizo - Wilcox (outcrop)
- Carrizo - Wilcox (subcrop)
- Hueco - Mesilla Basins
- Ogallala
- Edwards - Trinity Plateau (outcrop)
- Edwards - Trinity Plateau (subcrop)
- Edwards BFZ (outcrop)
- Edwards BFZ (subcrop)
- Trinity (outcrop)
- Trinity (subcrop)



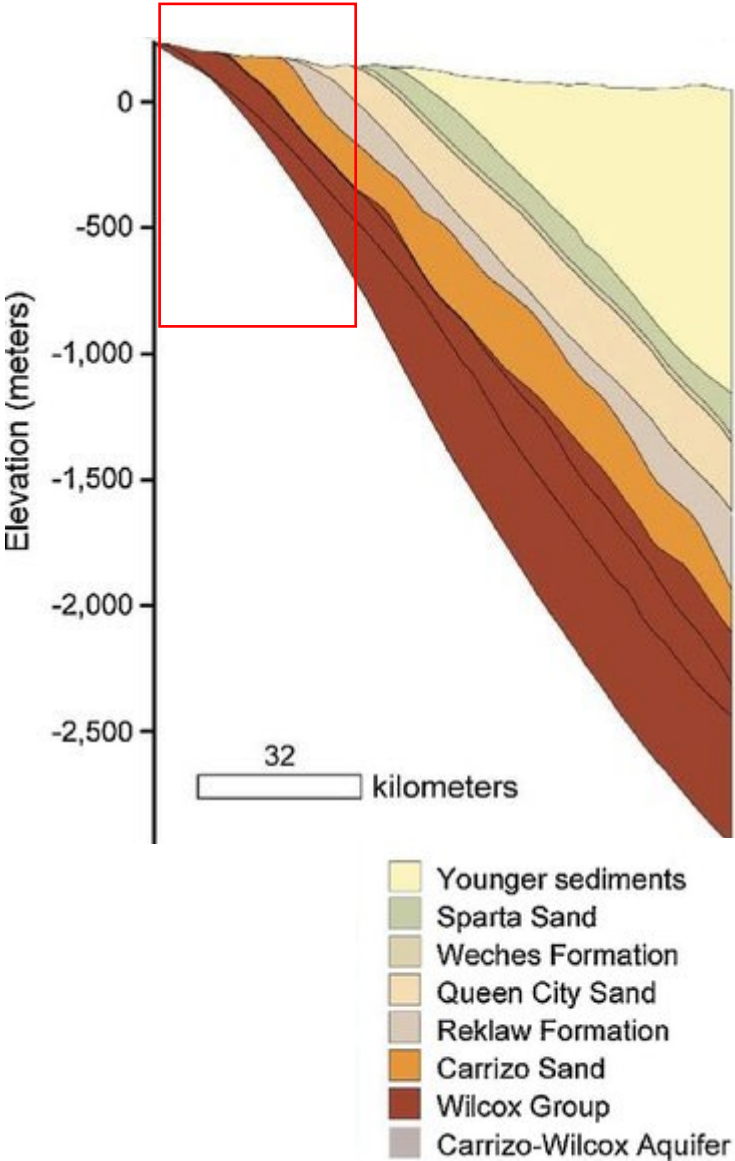
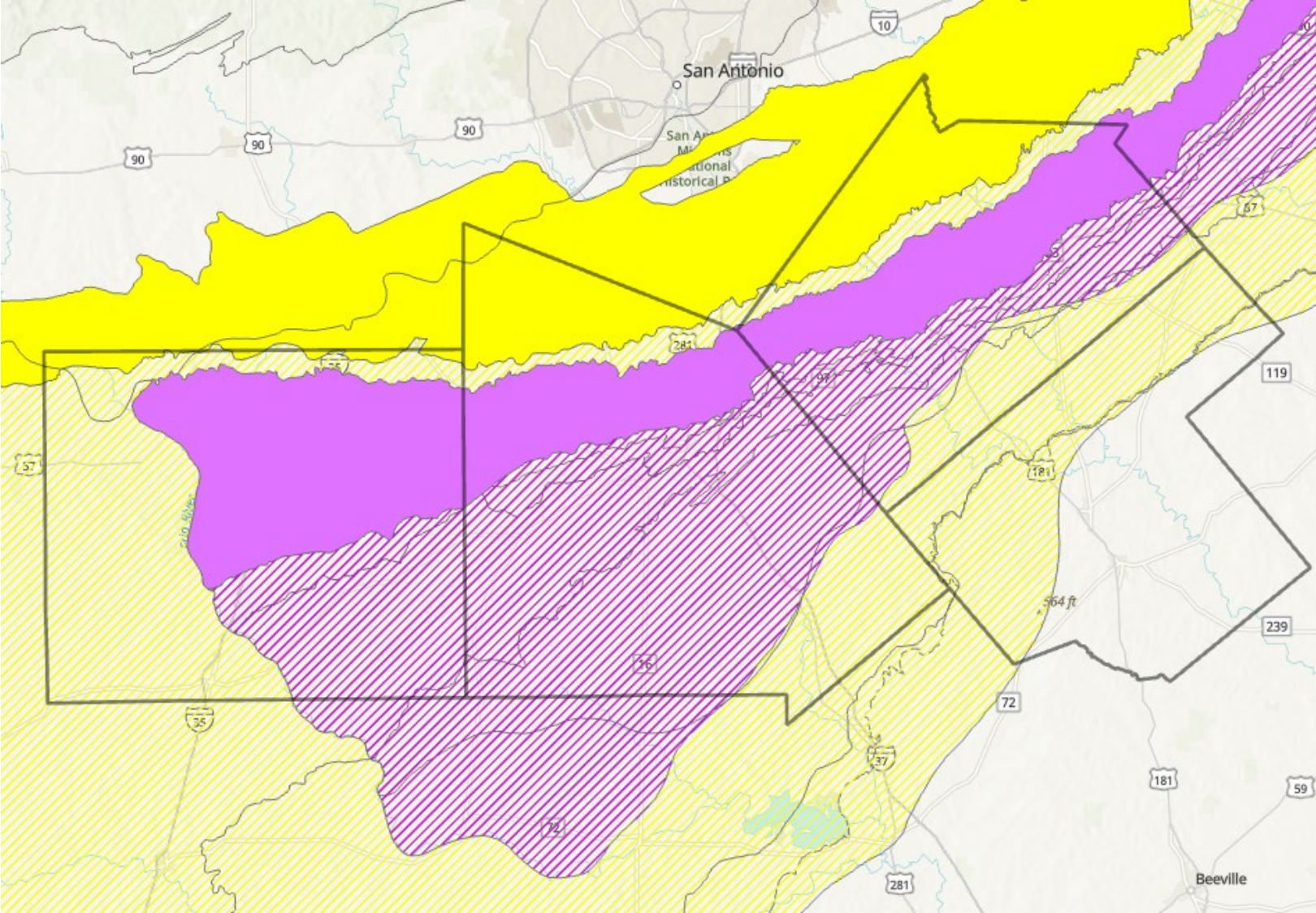
- Carrizo
- Wilcox Group
- Sparta
- Queen City
- Gulf Coast
- Yegua
- Cook Mountain
- Edwards

Carrizo

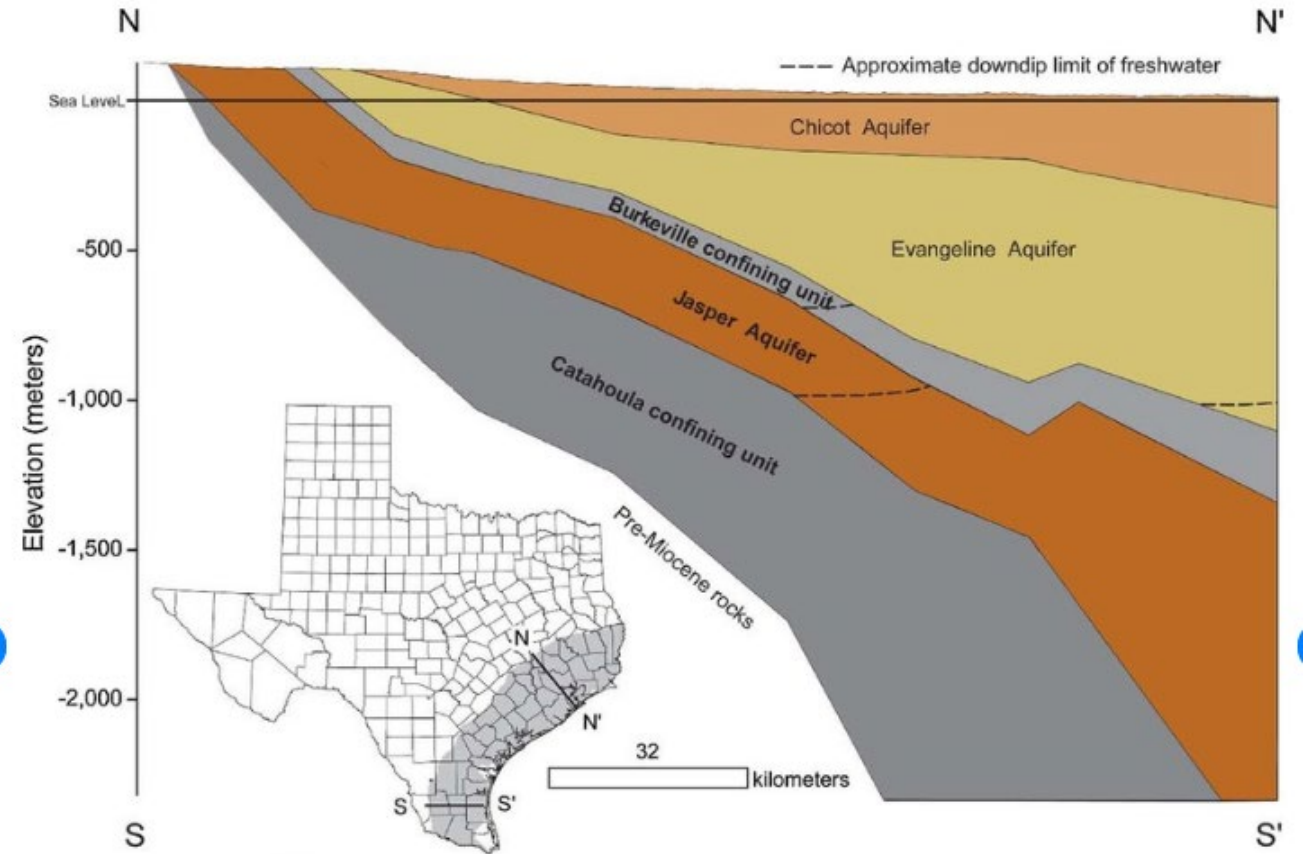
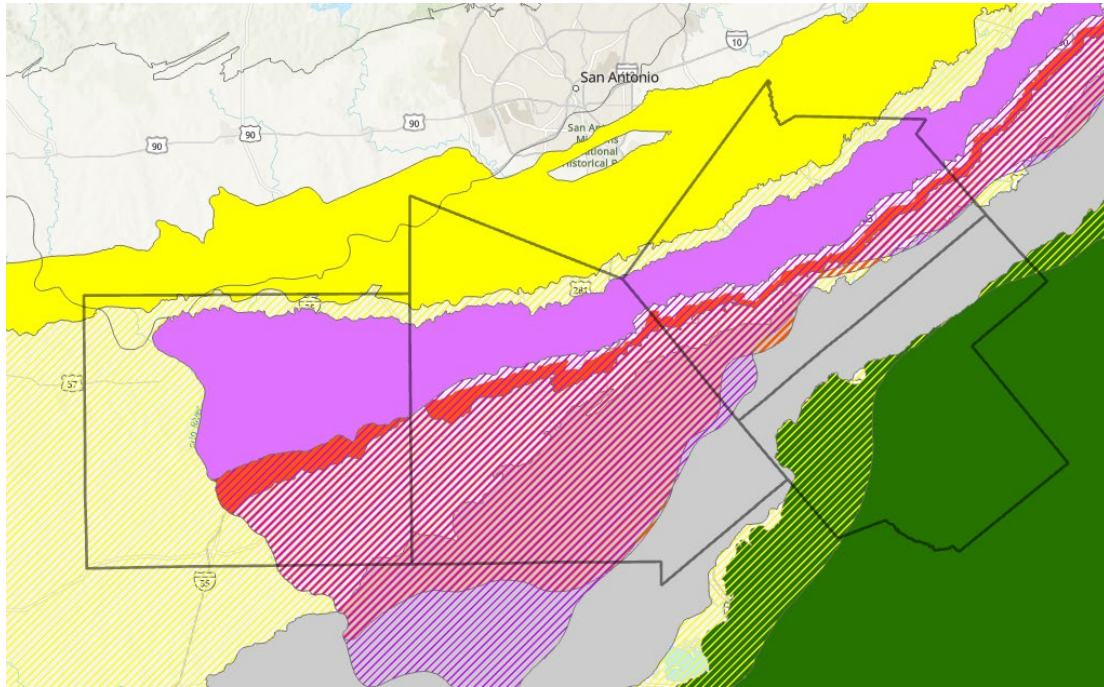


- Younger sediments
- Sparta Sand
- Weches Formation
- Queen City Sand
- Reklaw Formation
- Carrizo Sand
- Wilcox Group
- Carrizo-Wilcox Aquifer

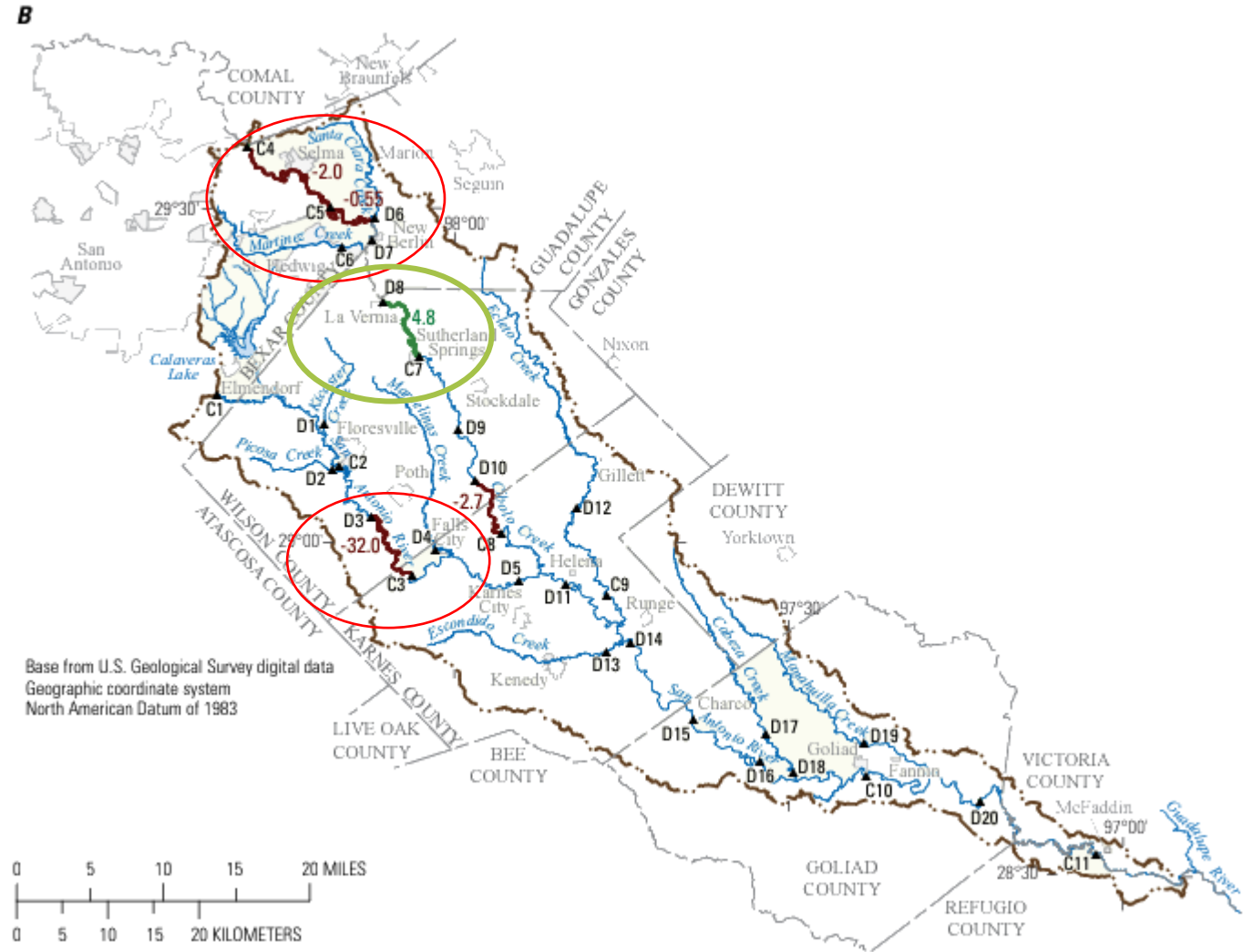
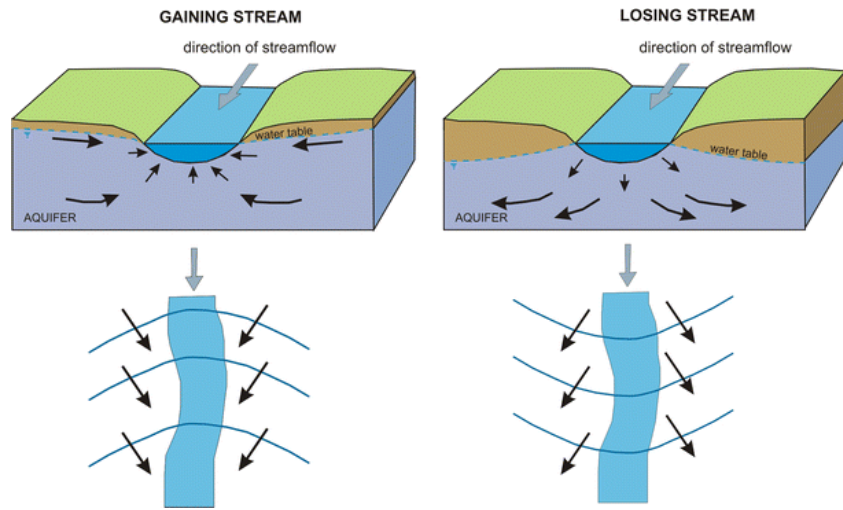
Queen City



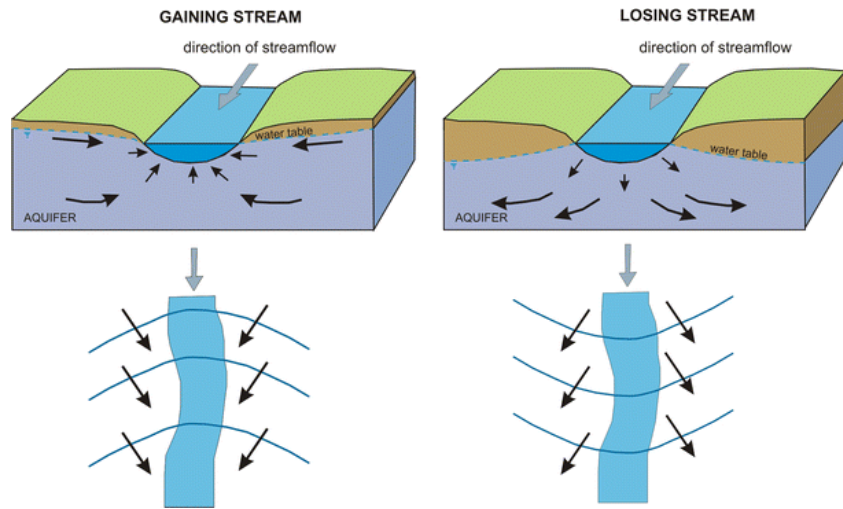
Gulf Coast System



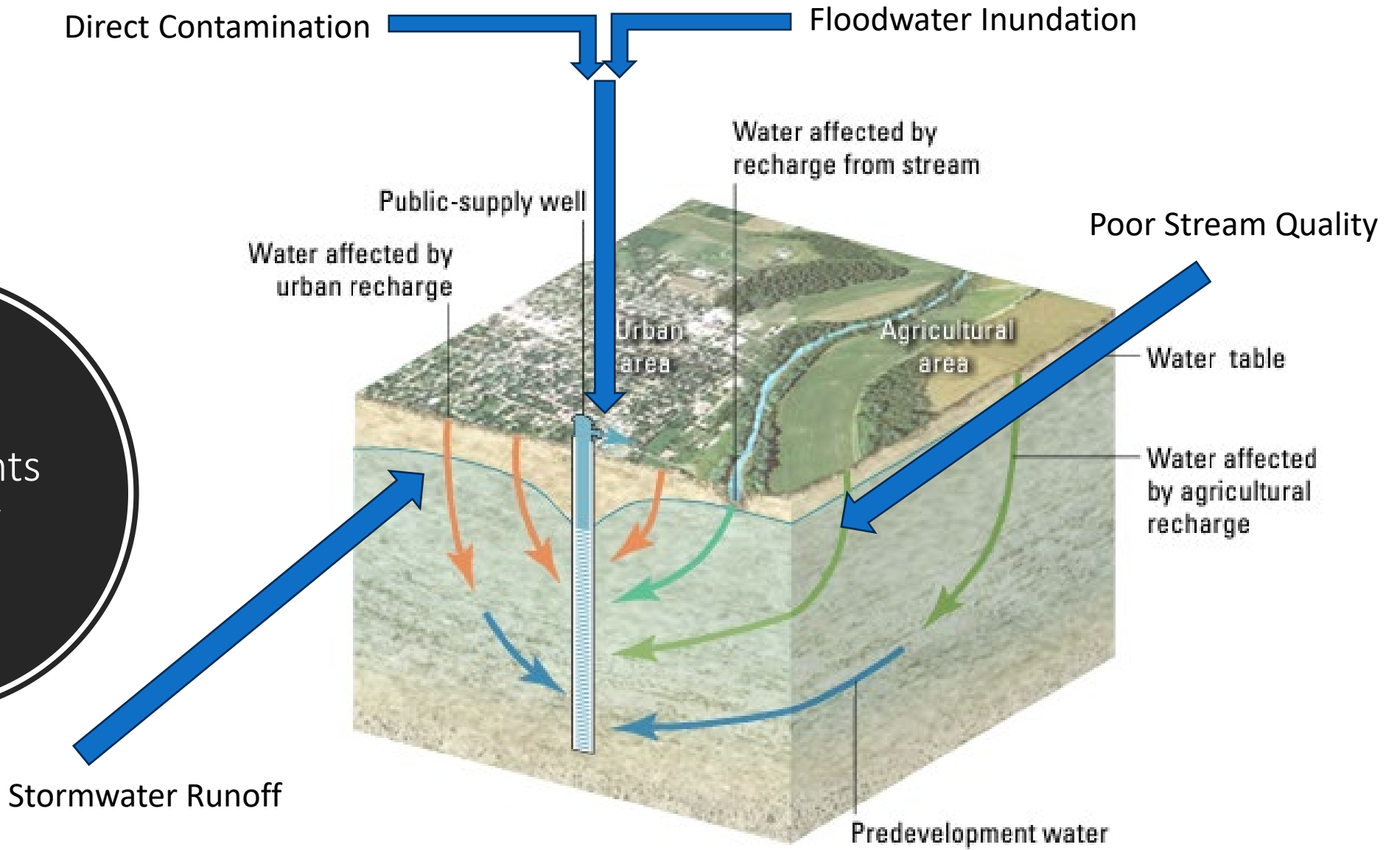
How the San Antonio River Watershed interacts with Groundwater



How the San Antonio River interacts with Groundwater



How do
contaminants
get to my
well?



Water Quality

- Drinking Water Constituents

- pH
- Conductivity
- TDS
- Nitrate/Nitrite
- Chloride
- Sulfate
- Select Ions/Metals

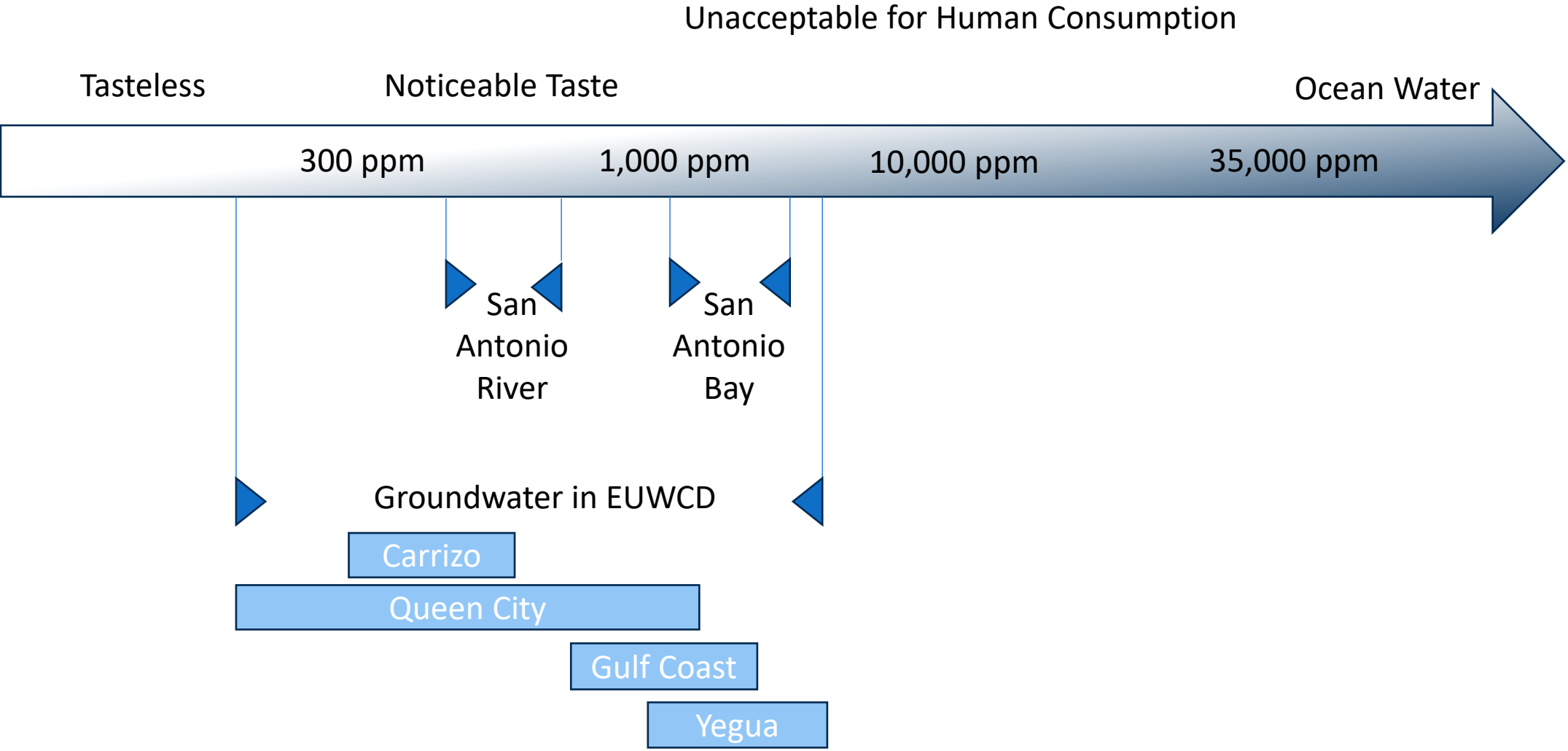
- Total Dissolved Solids (TDS)

- Indicator of General Quality
- Measurement of inorganic and organic substances dissolved in water
 - Salts
 - Ions
 - Minerals

- *E. coli* Bacteria

- Indicator of fecal contamination

Total Dissolved Solids





Arrowhead residents raise concerns about their 'blood-brown' water

[Open Audio Article Player](#)

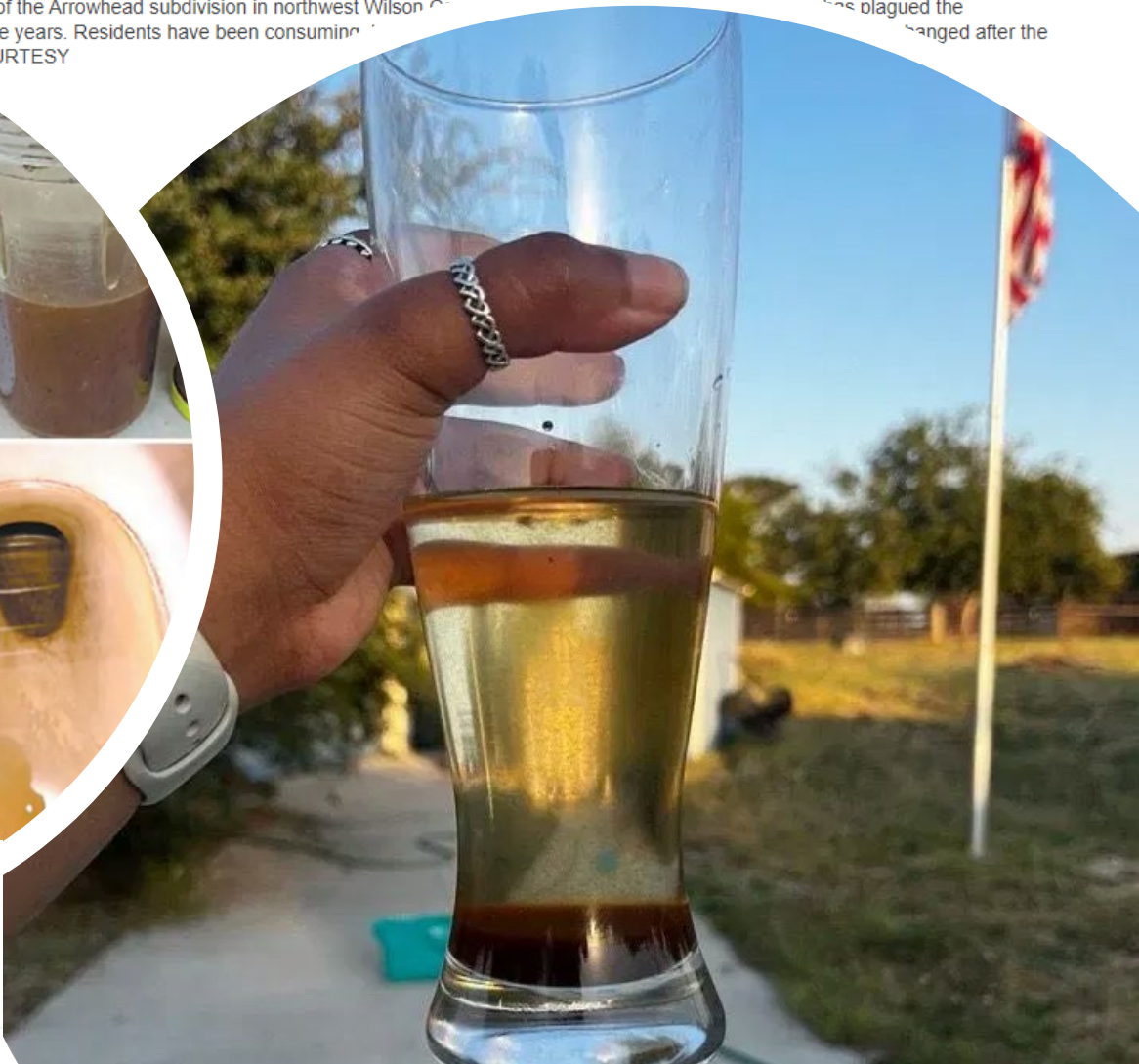
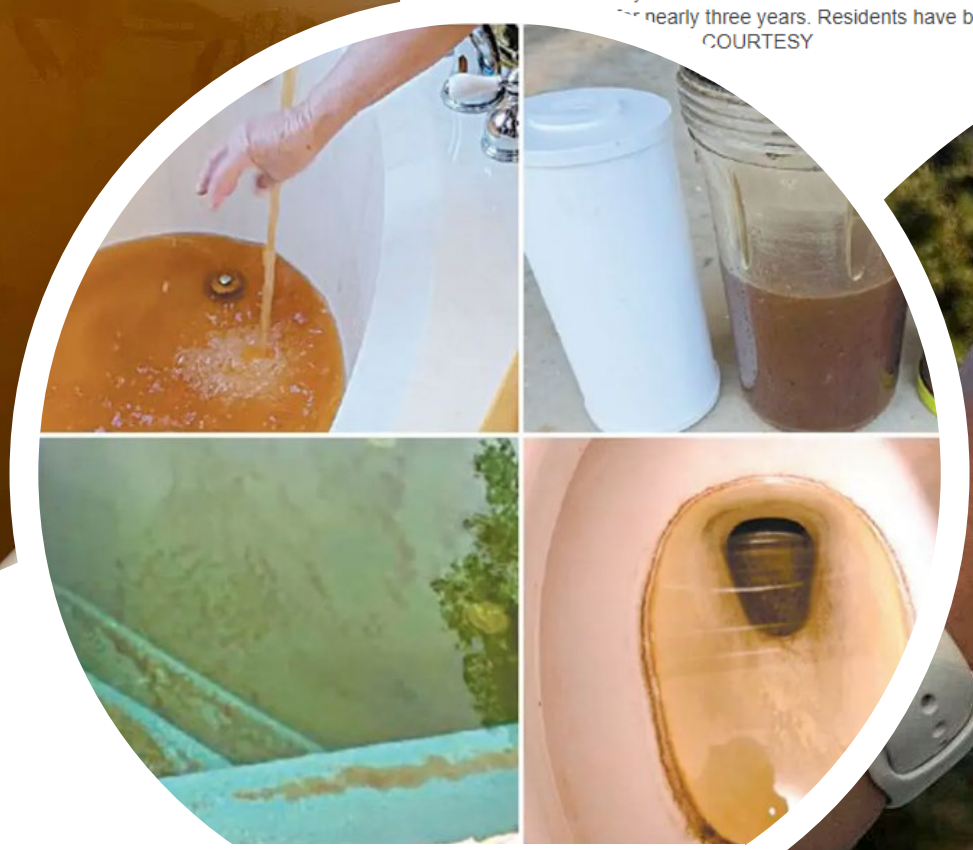
October 08, 2024

By Rachel Draper

Wilson County News

Photos shared by residents of the Arrowhead subdivision in northwest Wilson County have shown a significant change in water quality for nearly three years. Residents have been consuming this water since the change. COURTESY

has plagued the
changed after the



Residents, State officials call Floresville water quality issues 'alarming'

>>> NEWSLETTER <<<

KNOW THE WATER BELOW

Evergreen Underground Water Conservation District

TOP NEWS OF THE MONTH

PLAN AHEAD FOR PRODUCTION REPORTING



Public water supply and industrial users are required to submit monthly production reports. All other permitted users are required to report annually.

Reporting groundwater production is a key responsibility of well owners. The EUWCD collects this data in order to understand how much groundwater is pumped from each aquifer in the District. Evergreen personnel analyze this data to improve scientific understanding of the aquifers and build models to simulate future conditions and availability of groundwater.



All permitted wells should monitor ground water production with the use of an approved water flow meter.

Evergreen uses these tools to better monitor and manage our groundwater resources. Even more, we provide data to the regional water planning process, which guides water conservation and use planning. Data characterizing water use within the district is an integral part of planning for future use of water within our region.



Production reports can be submitted online at <https://www.evergreenwcd.org>.

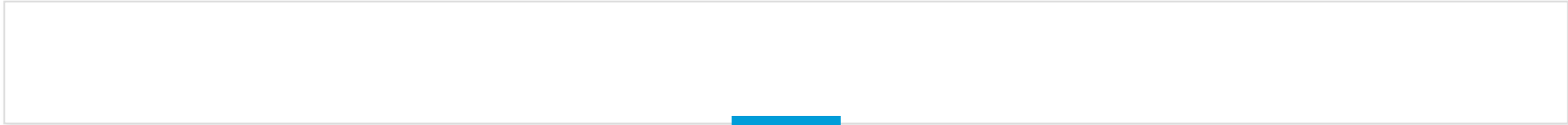
Now is a great time to check your meter to ensure it is functioning properly. If you need assistance with selecting or purchasing a water flow meter, please contact the EUWCD office.

Common Questions About Groundwater Quality

- Why does my well water smell like sulfur?
- Why does my well water have sand/grit?
- Why is my well water discolored?
- Why does my well water have *E. coli*?
- Is my well water safe to drink?

TEXAS WELL OWNER NETWORK

What can you do to protect the water...



SAN ANTONIO
RIVER AUTHORITY

WILSON COUNTY COLLECTION EVENT

HOUSEHOLD HAZARDOUS WASTE, USED TIRES,
USED ELECTRONICS & PHARMACEUTICAL WASTE

November 2, 2024 • 8 a.m. - Noon

Wilson County Expo Center

435 TX-97 E, Floresville, TX 78114



Household WATER CONSERVATION

Did you know?



10% of homes have leaks
greater than 90 gallons
per day.



A faucet leaking one drop
per second will waste
3,000 gallons per year.



The average homeowner
could save 10% on their water
bill by repairing their leaks.



Look for the Water Sense Logo when buying appliances.
These appliances are certified by a third party to meet EPA
standards for water efficiency and performance.

Know the water below...

- Ensure your wells are registered or permitted.
- Report your groundwater production.
- Monitor your groundwater use.



Aarin Teague
General Manager
Aarin.Teague@evergreenuwcd.org
830.596.4186

Evergreen Underground Water Conservation District

